

GENERAL NOTES:
 1. DRAWINGS MUST NOT BE SCALED. ONLY FIGURED DIMS. TO BE USED.
 2. DIMENSIONS MUST BE VERIFIED ON SITE BEFORE ANY WORK IS PUT IN HAND.
 3. ALL WORK MUST COMPLY WITH LOCAL MUNICIPAL BY-LAWS.
 4. COPYRIGHT RESERVED.

REVISIONS:

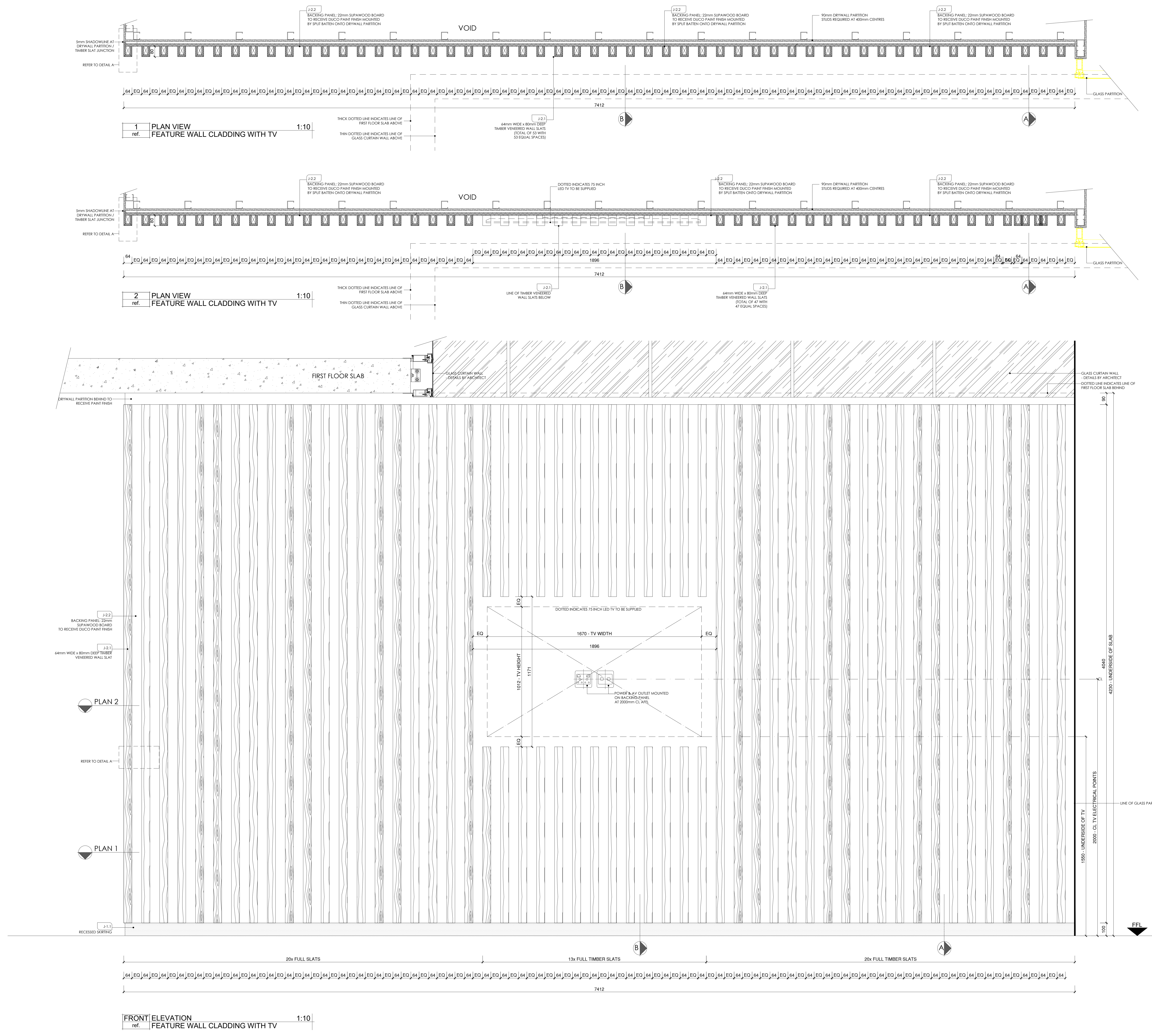
NO.	DATE	DESCRIPTION
A	13.08.14	DRYWALL PARTITIONING UPDATED TO SHOW 400mm CENTRES FOR STUD WORK
B	20.10.14	SPECS REVISED: TIMBER SLAT REPEAT INCREASED

CONSTRUCTION ISSUE

NO.	DATE	DESCRIPTION
01		

LEGEND: JOINERY FINISHES & FITTINGS

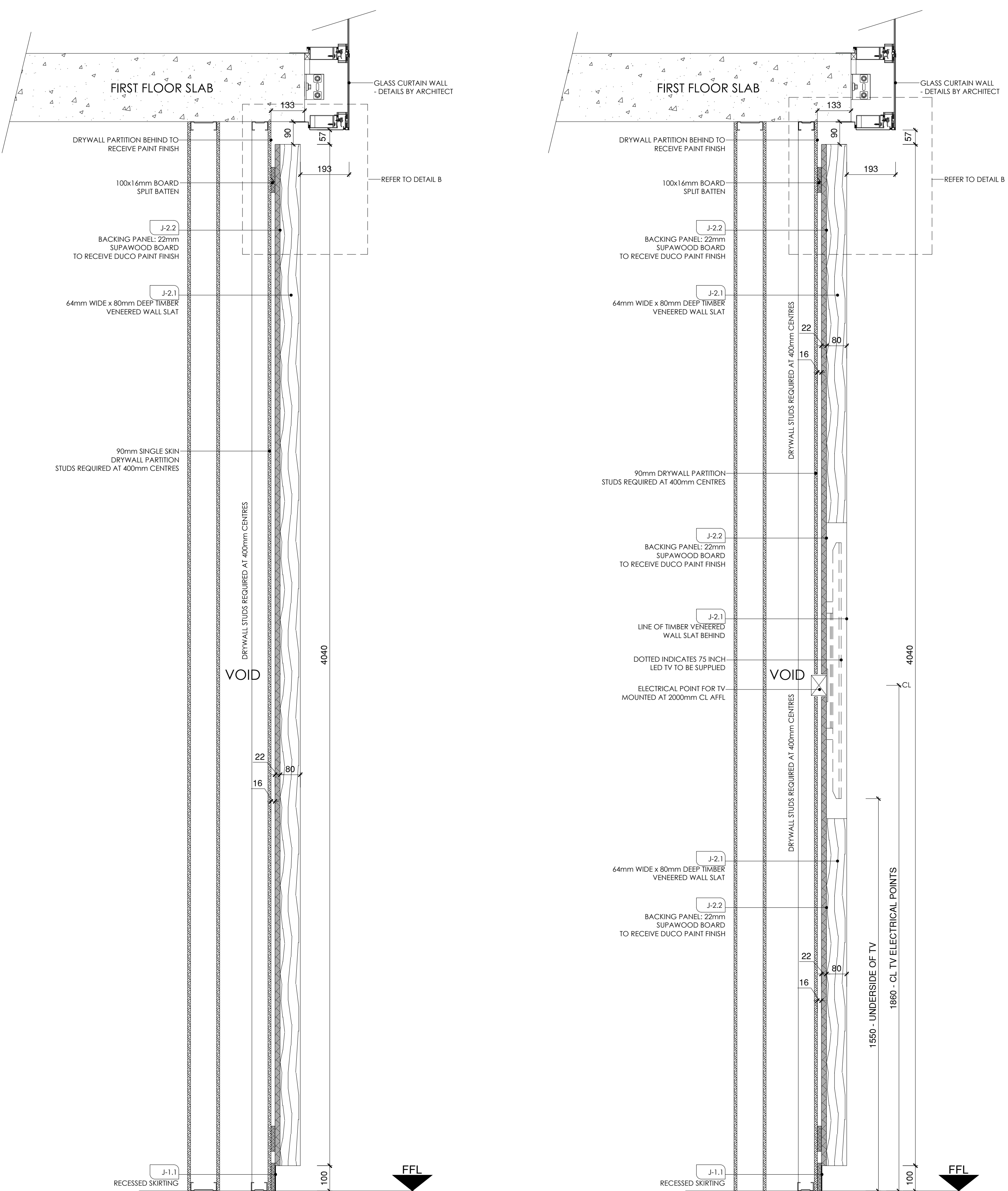
No.	Item / Component	Finish / Code	Finish Description
1	Base & Sill	Brushed Aluminium	Brush: 1/2" Deep 4000 Series; Sill: 1/2" x 3/4" x 3/4" per 1000mm
2	Glazing Panel	Aluminum	Brush: 1/2" Deep 4000 Series; Sill: 1/2" x 3/4" x 3/4" per 1000mm
3	Wall cladding	Timber	Timber: 47mm x 80mm x 2000mm (EQ) - 47mm x 80mm x 2000mm (EQ) - 47mm x 80mm x 2000mm (EQ)
4	Edging	Timber	Timber: 47mm x 80mm x 2000mm (EQ) - 47mm x 80mm x 2000mm (EQ) - 47mm x 80mm x 2000mm (EQ)



DRAWING TITLE:
**GROUND FLOOR
 FEATURE WALL
 CLADDING DETAIL PLAN &
 ELEVATION**

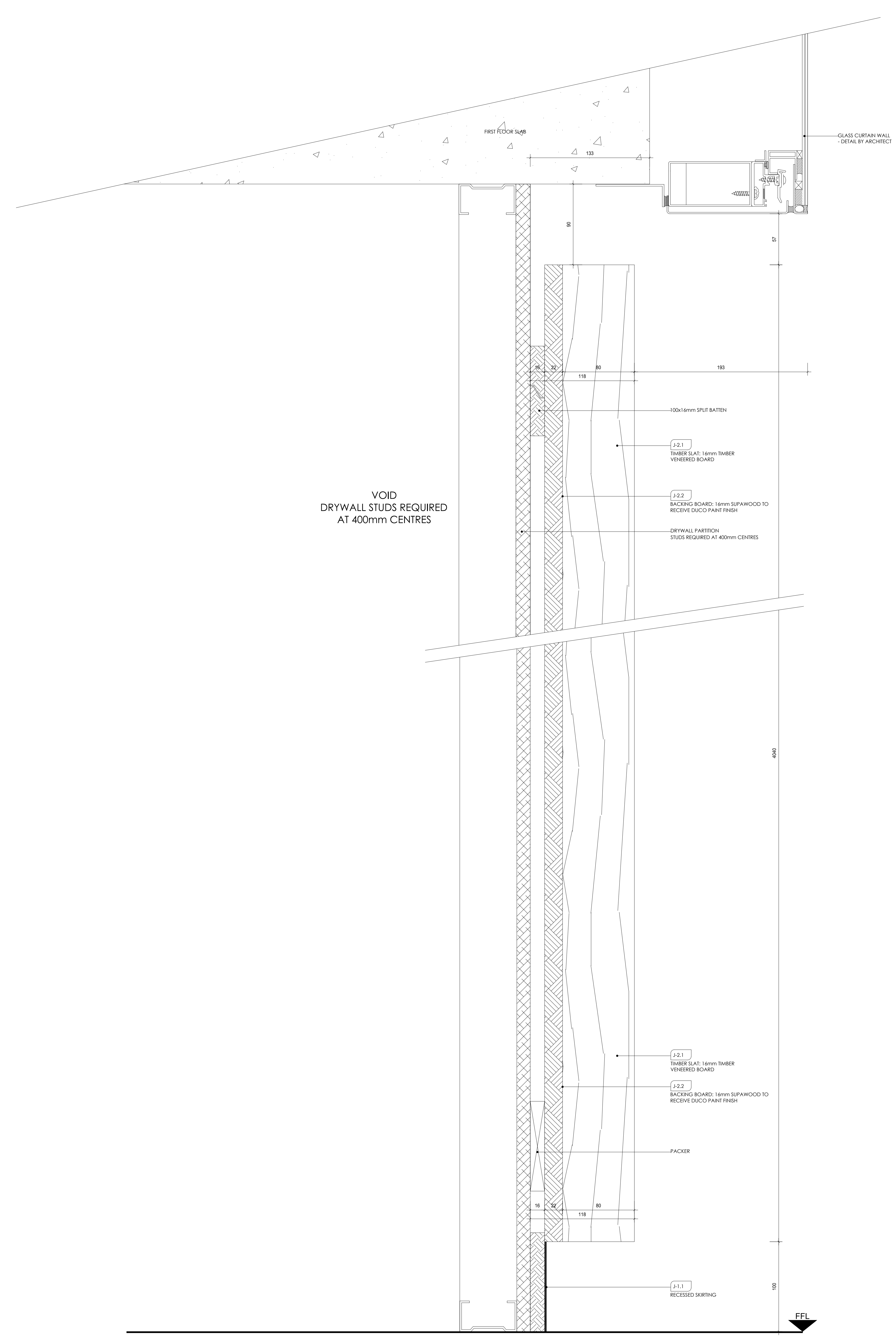
FOR INFORMATION

DATE: 2014.08.19	DRAWN: K/JH	SCALE: 1:10
PROJECT NO.: WW001-	DRAWING NO.: 603A	REVISION: B

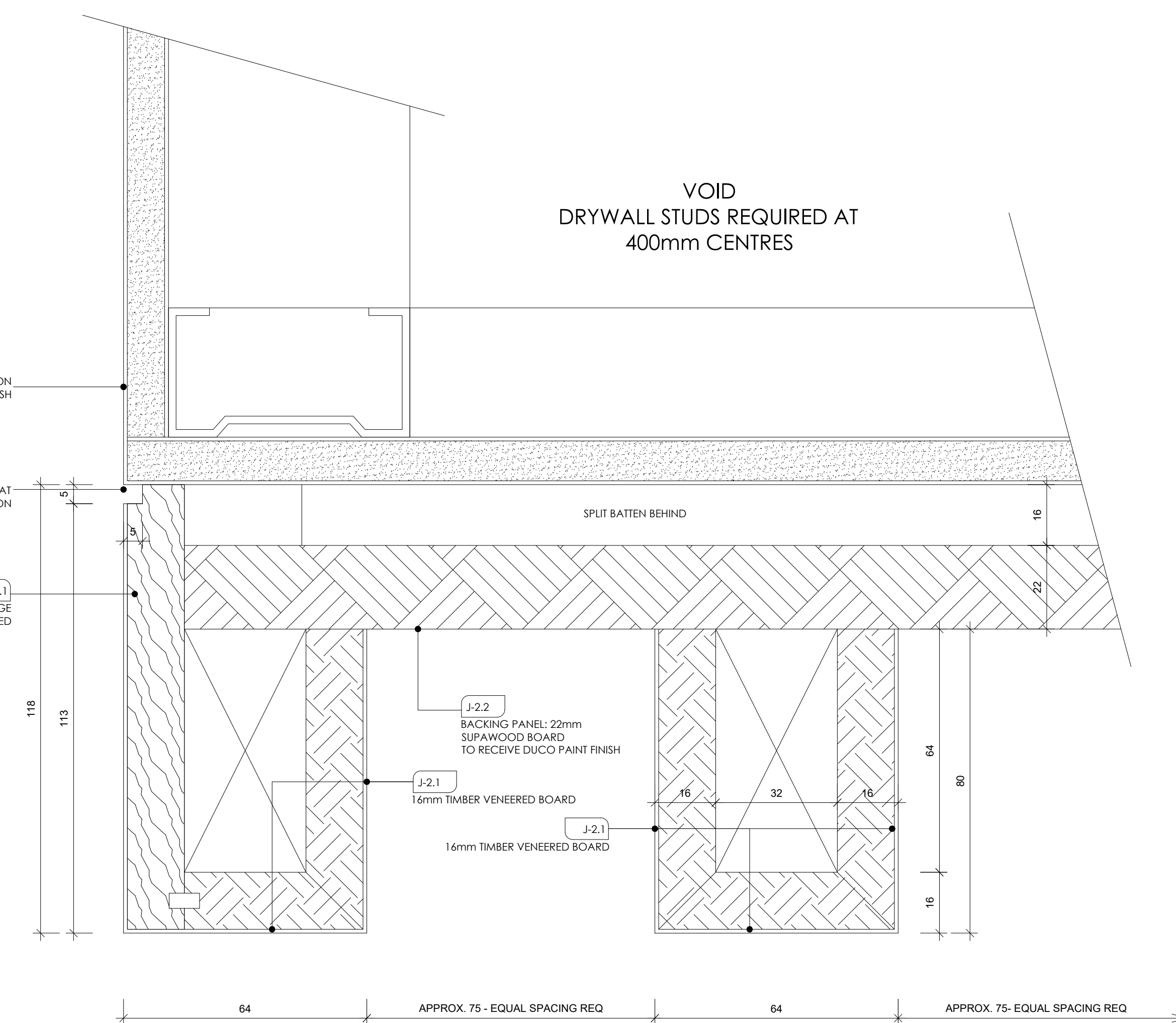


A-A SECTION 1:10
 ref. FEATURE WALL CLADDING WITH TV

B-B SECTION 1:10
 ref. FEATURE WALL CLADDING WITH TV



DET B SECTION DETAIL THRU WALL CLADDING 1:2
 ref. FEATURE WALL CLADDING



DET A CORNER SLAT DETAIL 1:1
 ref. FEATURE WALL CLADDING

GENERAL NOTES:
 1. DRAWINGS MUST NOT BE SCALED. ONLY FIGURED DIMS. TO BE USED.
 2. DIMENSIONS MUST BE VERIFIED ON SITE BEFORE ANY WORK IS PUT IN HAND.
 3. ALL WORK MUST COMPLY WITH LOCAL MUNICIPAL BY-LAWS.
 4. COPYRIGHT RESERVED.

REVISIONS:
 PRE - CONSTRUCTION ISSUE
 A 13.03.14 ORIGINAL PARTITIONING LOCATED TO SHOW 400mm CENTRES FOR STUD WORK
 B 20.10.14 SPECS REVISED: TIMBER SLAT REPEAT INCREASED

CONSTRUCTION ISSUE
 01

LEGEND: JOINERY FINISHES & FITTINGS

No.	Item / Component	Finish Code	Finish Description
1	Base & Casings	Brushed Aluminium	Brush: 1" Square NSF Brush; Edge: 1/4" x 3/8" as per Finish Code
2	Carcase / Wall cladding	Aluminium (See: White)	Brush: 1/2" Square NSF Brush; Edge: 1/4" x 3/8" as per Finish Code [Note: Single face Aluminium finish, unless otherwise stated. Backing to be done with commercial veneer.]
4	Edging	Solid endgrain teak	20mm solid endgrain teak to match the associated board from Edging to the vertical edge. Finish: commercial veneer. [Note: One use of Pine endgrain, two uses of Aluminium. Consider 'Solid endgrain' - Glass finish to protect surface.] 15mm solid endgrain teak to finish the associated board edge. Edging to be solid endgrain teak, unless otherwise specified. All edges finished, rounded smooth.

DRAWING TITLE:
 GROUND FLOOR
 FEATURE WALL
 CLADDING DETAIL
 SECTIONS

FOR INFORMATION
 DATE: 2014.08.19
 DRAWN: K/JH
 SCALE: AS SHOWN
 PROJECT NO.: WW001-603B
 DRAWING NO.: B
 REVISION: